

344 Firesafe Ball Valve

3-Piece Full and Standard Port
ISO 5211 Direct Mount Pad



For Automated &
Manual Service

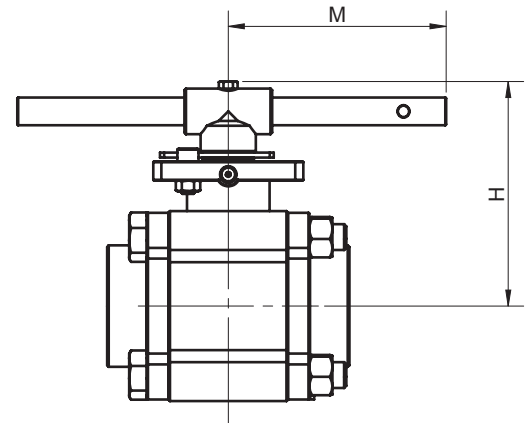
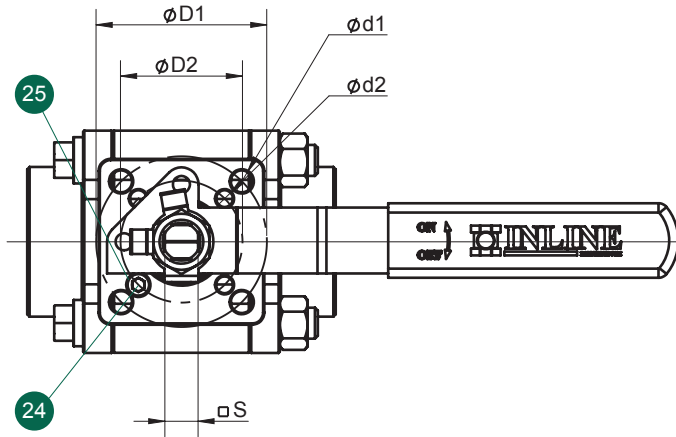
General Chemical

Industrial

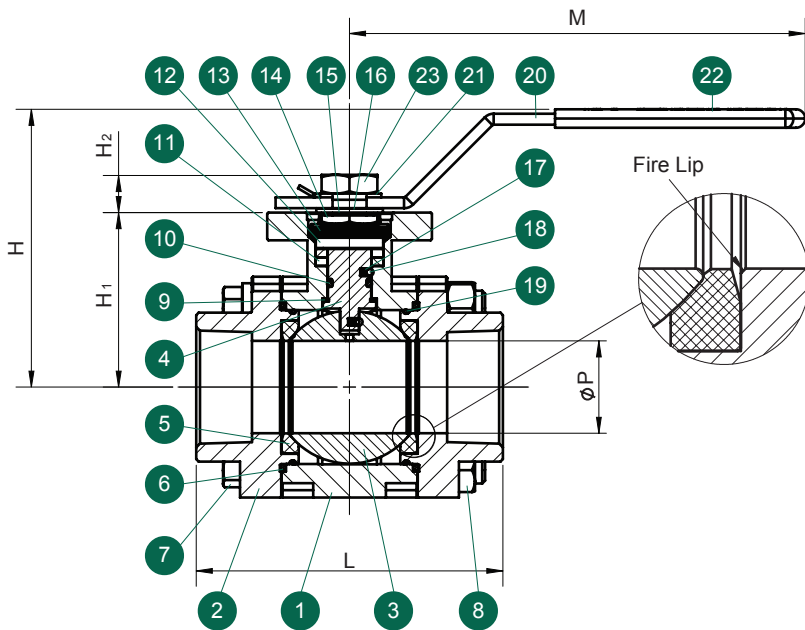
Petrochemical

Refining

and Other Corrosion
Resistant Applications



2" Full Port & 2 1/2" Standard Port



Valve Components			
#	Part Name	Material	Qty.
1	Body	A351 Gr. CF8M	1
2	End Cap	A351 Gr. CF8M	2
3	Ball	316SS	1
4	Stem	316SS	1
5	Seat	TFM	2
6	Body Seal	Graphite	2
7	Body Bolt	Grade B8	4
8	Body Nut	304SS	4
9	Thrust Washer	PEEK	1
10	Stem O-Ring	Viton	1
11	Stem Packing Set	Graphite	1
12	Gland Washer	304SS	1
13	Belleville Washer	301SS	4
14	Gland Nut	304SS	1
15	Gland Nut Lock Washer	304SS	1
16	Stem Spacer	304SS	1
17	Stem Spring	301SS	2
18	Stem Ball	304SS	2
19	End Cap O-Ring	Viton	2
20	Handle	304SS	1
21	Handle Nut Lock Washer	304SS	1
22	Handle Cover	Vinyl	1
23	Handle Nut	304SS	1
24	Stop Pin	304SS	1
25	Stop Pin Nut	304SS	1

Size		Dimensions (Inches)												
344F	344S	L	M	P	H	H ₁	H ₂	D ₁	D ₂	d ₁	d ₂	S	ISO 5211 Pattern	Wt. (lbs)
1/4	—	2.58	5.41	0.45	3.02	1.80	0.38	1.97	1.42	0.27	0.22	0.35	F03 / F05*	1.65
3/8	1/2	2.58	5.41	0.45	3.02	1.80	0.38	1.97	1.42	0.27	0.22	0.35	F03 / F05*	1.65
1/2	3/4	2.80	5.41	0.57	3.11	1.89	0.38	1.97	1.42	0.27	0.22	0.35	F03 / F05*	2.15
3/4	1	3.69	6.37	0.82	3.22	1.99	0.43	1.97	1.65	0.27	0.22	0.43	F04 / F05*	3.46
1	1 1/4	4.19	6.37	1.00	3.41	2.19	0.41	1.97	1.65	0.27	0.22	0.43	F04 / F05*	5.02
1 1/4	1 1/2	4.54	8.02	1.25	4.21	2.56	0.61	2.76	1.97	0.35	0.27	0.55	F05 / F07*	8.34
1 1/2	2	4.98	8.02	1.50	4.48	2.84	0.60	2.76	1.97	0.35	0.27	0.55	F05 / F07*	10.82
2	2 1/2	5.87	5.51	2.00	5.44	3.50	0.77	4.02	2.76	0.44	0.35	0.67	F07 / F10*	22.11

* Direct mount with stem adapter bushing



Automation Systems



Direct Mount Products

344 Firesafe Ordering Information

Example: 2" 3-Piece Firesafe Standard Port Direct Mount Ball Valve, ISO 5211 Direct Mount Pad with Lever Handle and Locking Device, 316SS Body and Trim, TFM Seats, Graphite Seals, NPT Ends

344S **D** **6** **6** **6** **6** **M** **G** **TT** **2** **S**

Valve Series	Valve Size		Body Material	End Material	Ball Material	Stem Material	Seat	Seal	End Connection ¹	Port	Ball Config.
344F - Full Port	2 [†]	1/4"	6 - A351 Gr.	6 - A351 Gr.	6 - A351 Gr.	6 - A351 Gr.	M - TFM	G - Graphite	T - NPT	2 - 2 Way	S - Straight Port
	3 [†]	3/8"	CF8M	CF8M	CF8M	CF8M	C - RTFE (15% C.F.)	H - S Gasket Graphite	S - Socket Weld		
344S - Standard Port	5	1/2"	(316)	(316)	(316)	(316)	R - RTFE (15% G.F.)	Coated	1 - Butt Weld Sch. 10		
	7	3/4"	2 - A216 Gr.	2 - A216 Gr.	5 - Alloy 20	7 - 17-4	R - RTFE (15% G.F.)	Q - S Gasket	4 - Butt Weld Sch. 40		
	A	1"	WCB	WCB	8 - Alloy-C	5 - Alloy 20	S - Infill	PTFE	8 - Butt Weld Sch. 80		
	B	1 1/4"		3 - A351 Gr.	ASTM 494 Type	8 - Alloy-C	(Carbon, Carbon Fiber, Modified PTFE)	Coated	A - ANSI 150# Flanged		
	C	1 1/2"		CF3M	CW12MW	ASTM 494 Type			B - ANSI 300# Flanged		
	D	2"		(316L) ¹		CW12MW			P - Compression		
	E*	2 1/2"					T - PTFE		X - Other		

[†] Full Port Only

* Standard Port Only

¹ Butt Weld ends are A351 Gr. CF3M (316L)

Due to continuous product development, information may change without notice.



Distributed by:

INLINE INDUSTRIES, INC.

4701-A Littlejohn Street
 Baldwin Park, CA 91706
 Tel: (800) 568-8998
 (626) 813-6188
 Fax: (626) 813-6186
www.ballvalve.com
info@ballvalve.com