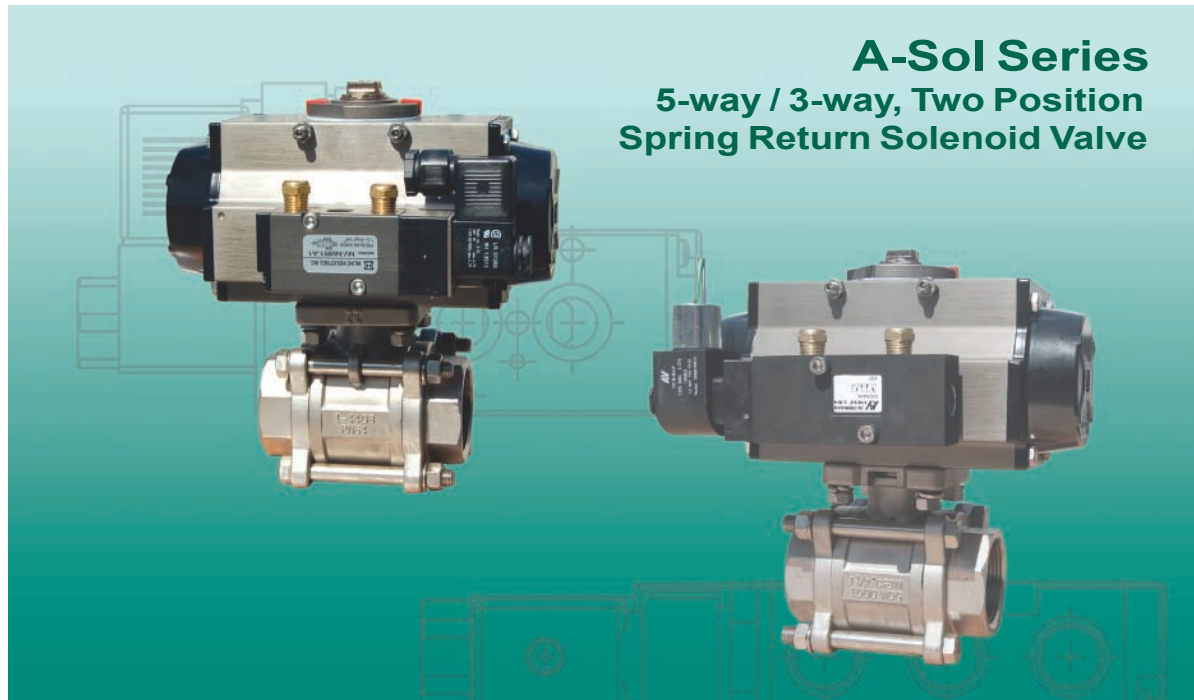


# A-Sol Solenoid Valve



**A-Sol Series**  
5-way / 3-way, Two Position  
Spring Return Solenoid Valve

## Standard Features

- Namur Mount
- Nema 4 / 4X / IP65
- 100% Duty Cycle
- Manual Override

## Options

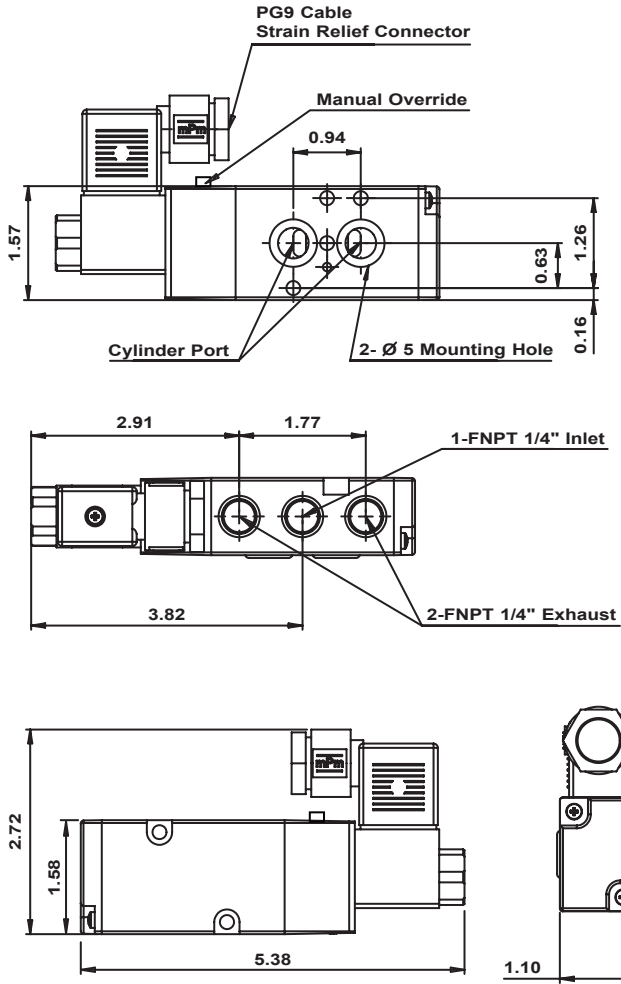
- 24VAC, 110V, 220V, or 12 & 24 VDC
- Nema 7
  - CL I: Div. 1; GR. A, B, C, D
  - CL II: GR. E, F, G
  - NEMA: 4, 4X, 7C, 7D
- Dual Coil

## Specification

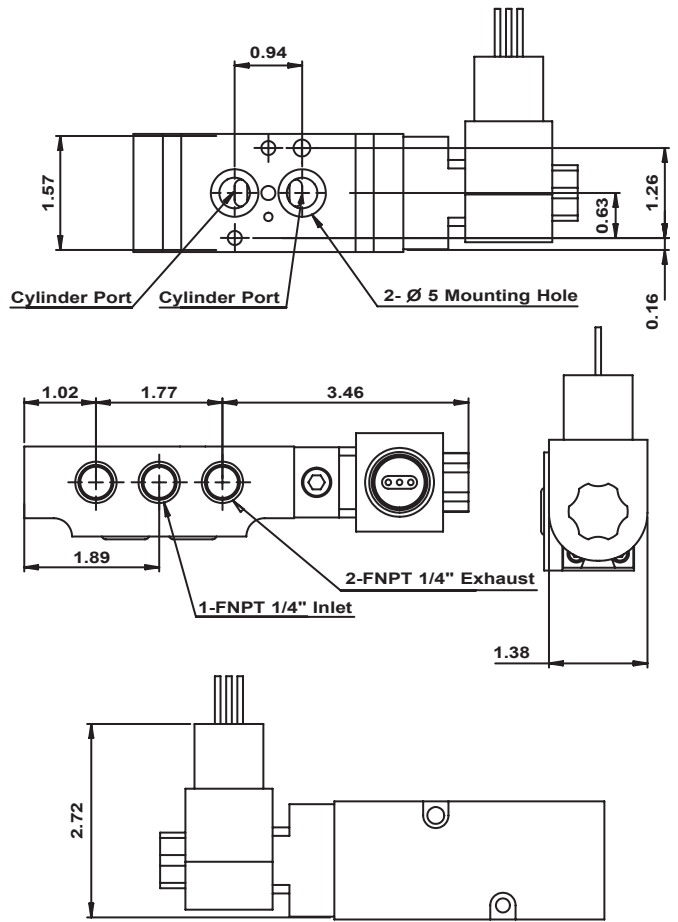
Model	Orifice Area	CV Factor
A-SOL-N4-NMR	25 mm <sup>2</sup>	1.40

Rate Voltage	AC 110V 50/60 HZ	AC 220V 50/60 HZ	DC 24V 50/60 HZ
Power Consumption	4.8 W / 200 mA		
Coil Insulation	JISC3202-B Class		
Electrical Connection	DIN 46350 / Strain Relief Electrical Connector (PG9 Cable)		
Duty Cycle	100% (Continuous)		
Temperature (°F)	41 °F ~ 122 °F		
Working Pressure	22 - 116 PSI		
Maximum Temp./Pressure	202 °F / 174 PSI		

# Nema 4 / 4X



# Nema 7



Series	Model	Namur Type	Operator	Voltage
<b>A-SOL</b>	<b>N4 / 4X</b> - Nema 4 Standard Coil <b>N7</b> - Nema 7 Explosion Proof Coil	<b>NMR</b> - Namur Type 5 Way Valve	<b>1</b> - Single Operator <b>2</b> - Double Operator	<b>A24V</b> - AC 24V 50/60 Hz <b>110V</b> - AC 110V 50/60 Hz <b>220V</b> - AC 220V 50/60 Hz <b>12V</b> - DC 12V <b>24V</b> - DC 24V



**INLINE INDUSTRIES, INC.**  
9056 Garvey Avenue  
Rosemead, CA 91770  
Tel: (626) 813-6188  
Fax: (626) 813-6186  
www.ballvalve.com  
info@ballvalve.com

Distributed by: