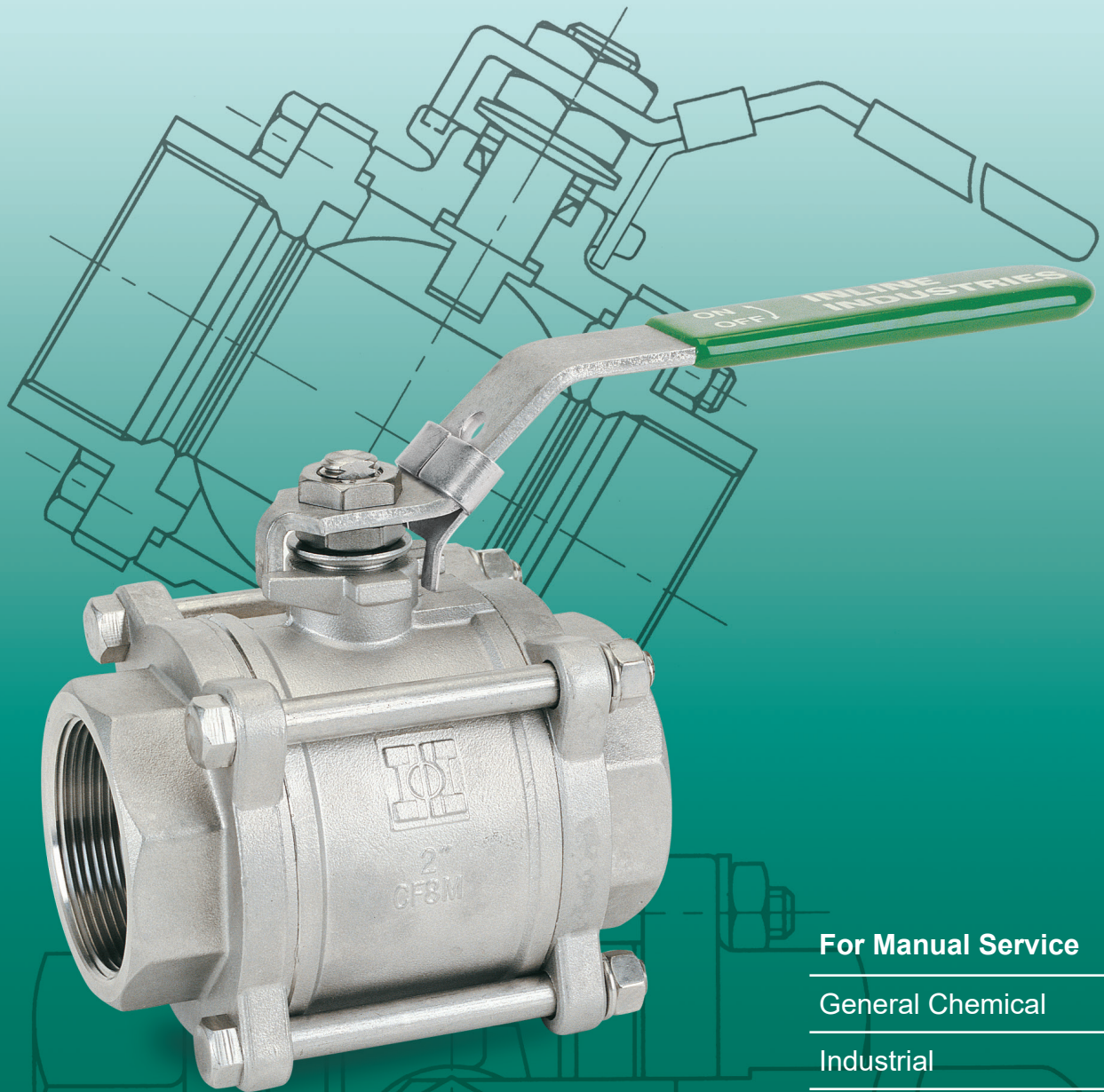


302F Ball Valve

3 Piece Full Port



For Manual Service

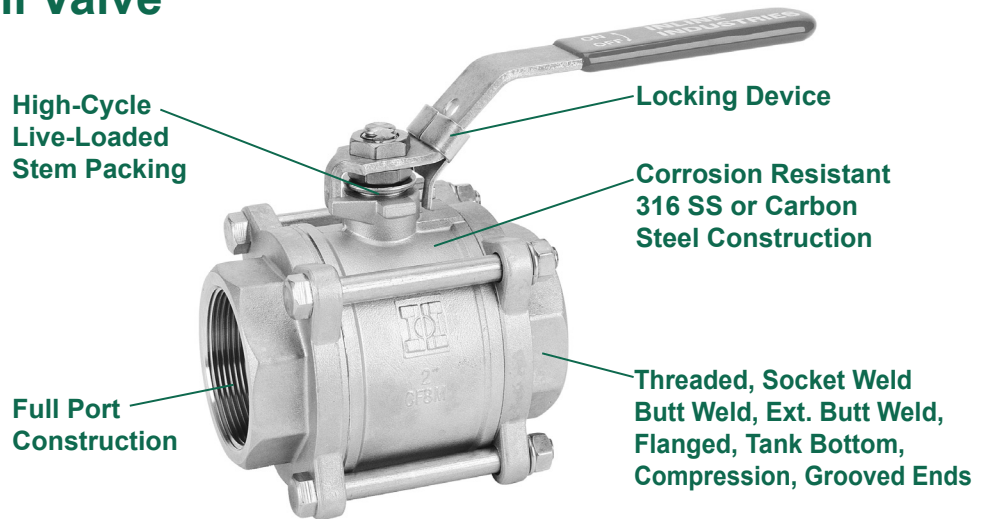
General Chemical

Industrial

Other Corrosion
Resistant Applications

The 302F Series Ball Valve

The 302F series ball valve delivers exceptional performance and economy in a 3-piece design. The full port design improves flow rates and minimizes the pressure drop through the valve. Our unique metal-backed seat design enhances overall valve performance, while the live-loaded stem packing automatically adjusts for wear and thermal variations.

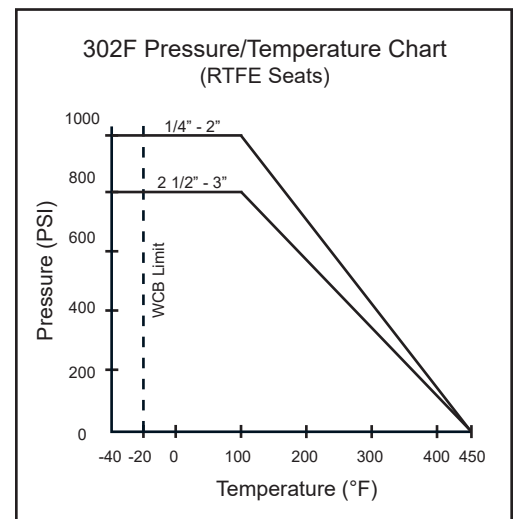


Standard Features and Benefits

- **High-Cycle, Live-Loaded Stem Packing**
Dynamic loading of stem packing ensures a tight seal through varying pressure and temperature conditions, reducing maintenance costs and extending service life
- **Blow-Out-Proof Stem**
Stem is bottom loaded to prevent removal when valve is in service
- **Full Port Design**
Full port construction improves flow characteristics for greater process efficiencies
- **3-Piece Construction**
Easier to Repair
- **Locking Device**
Enables plant personnel to secure valve in open or closed position when manually operated
- **End Cap Alignment Step**
Ensures easy and proper alignment between mating parts
- **Investment Cast**
Improves dimensional control and reduces porosity
- **Anti-Static Stem**
- **Standard Seats & Seals Suitable for 150 psi Saturated Steam**
- **Castings Meet NACE MR0175/ISO 15156**

Options

- **Available in NPT, Socket Weld, Butt Weld, Ext. Butt Weld, Flanged, Compression, Tank Bottom and Grooved End Connections**
- **Oval Handles (1/4" - 1 1/2")**
- **Seats and Seals Available in Various Materials**
- **Air Safety Exhaust Valve (ASEV)**
- **Stem Extensions**
- **Oxygen Cleaning**
- **Material Test Reports Available Upon Request**

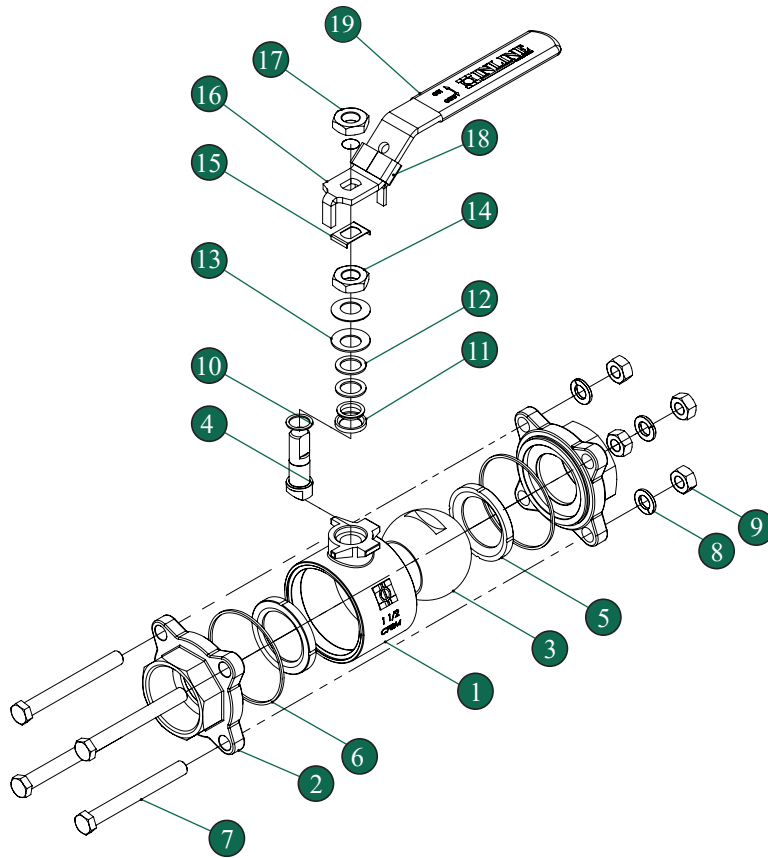


Operating Conditions

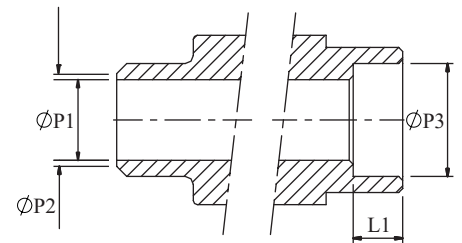
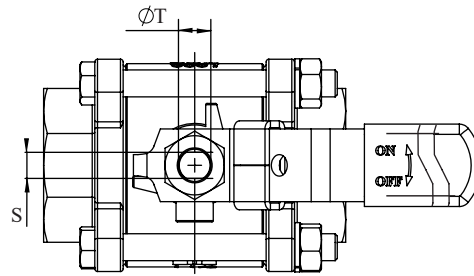
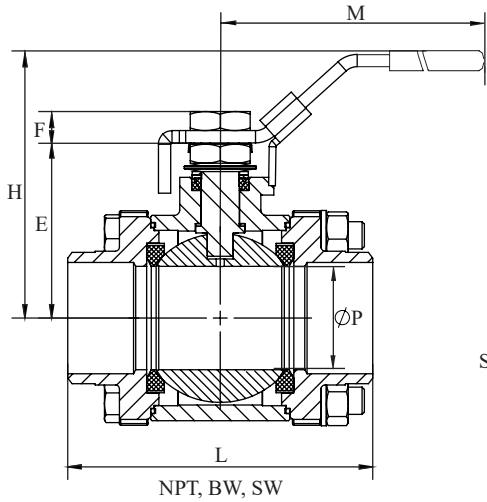
- **Temperature Range (RTFE):**
-40°F ~ 450°F
- **Maximum Pressure (RTFE):**
1000 PSI WOG (1/4" - 2")
800 PSI WOG (2 1/2" - 3")

Specifications

- All valves shell and seat tested to ANSI/ASME B16.34 and API 598
- All materials comply with applicable ASTM material specifications
- End connections:
All to ASME B16.34
NPT to ASME B1.20.1
Socket Weld to ASME B16.11
Butt Weld to ASME B16.25
Flanges to ASME B16.5



Valve Components			
No.	Part Name	Material	Qty
1	Body	CF8M	1
2	End Cap	CF8M	2
3	Ball	316 SS	1
4	Stem	316 SS	1
5	Seat	RTFE (15% G.F.)	2
6	Body Seal	PTFE	2
7	Body Bolt	304 SS	4
8	Split Lock Washer	304 SS	4
9	Body Nut	304 SS	4
10	Thrust Washer	RTFE (15% C.F.)	1
11	Stem Packing Set	PTFE	1
12	Packing Gland	304 SS	2
13	Belleville Washer	301 SS	2
14	Gland Nut	304 SS	1
15	Gland Nut Lock Washer	304 SS	1
16	Handle	304 SS	1
17	Handle Nut	304 SS	1
18	Handle Lock	304 SS	1
19	Handle Cover	Vinyl	1



Butt Weld (Sch.40) // Socket Weld

Dimensions (Inches)														
Size	L	L1	P	P1	P2	P3	M	H	E	F	S	T	C _v	Weight (lbs)*
1/4"	2.07	0.44	0.50	0.36	0.49	0.56	4.4	2.1	1.18	0.30	0.20	0.31	6.0	0.9
3/8"	2.07	0.44	0.50	0.49	0.62	0.69	4.4	2.1	1.18	0.30	0.20	0.31	12.0	0.8
1/2"	2.32	0.50	0.59	0.62	0.75	0.85	4.4	2.1	1.25	0.30	0.20	0.31	15.9	1.0
3/4"	3.06	0.56	0.79	0.82	0.95	1.07	5.2	2.5	1.54	0.30	0.26	0.38	30.2	1.8
1"	3.30	0.63	0.98	1.05	1.17	1.33	5.7	2.8	1.83	0.38	0.31	0.46	46.0	2.5
1 1/4"	3.91	0.69	1.25	1.38	1.51	1.67	5.7	3.1	2.09	0.31	0.31	0.46	74.4	3.9
1 1/2"	4.41	0.75	1.50	1.61	1.74	1.91	7.5	3.9	2.53	0.40	0.38	0.54	115	5.9
2"	5.16	0.87	2.00	2.07	2.19	2.41	7.5	4.2	2.83	0.45	0.38	0.54	205	9.4
2 1/2"	6.46	0.87	2.56	2.47	2.59	2.91	12.2	5.7	3.66	0.71	0.47	0.77	340	18.0
3"	7.40	1.00	3.15	3.07	3.19	3.54	12.2	6.1	4.06	0.71	0.47	0.77	552	27.4

*Weights are based on NPT Ends

C_v value represents flow data to ISA 75.01.01 - 2007



Automation Systems



Direct Mount Products

302F Ordering Information

Example: 2" 3-Piece Full Port Ball Valve with Lever Handle and Locking Device, 316 SS Body and Trim, RTFE (15% G.F.) Seats, PTFE Seals, NPT Ends

302F	D	6	6	6	6	R	T	TT	2	S
Valve Series	Valve Size	Body Material	End Material	Ball Material	Stem Material	Seat	Seal	End Connection	Port	Ball Config.
302F - Full Port 302C - Compression	2 1/4" 3 3/8" 5 1/2" 7 3/4" A 1" B 1 1/4" C 1 1/2" D 2" E 2 1/2" F 3"	6 - A351 Gr. CF8M (316) 2 - A216 Gr. WCB (CS)	6 - A351 Gr. CF8M (316) 2 - A216 Gr. WCB (CS) 3 - A351 Gr. CF3M (316L)	6 - 316 SS	6 - 316 SS	R - RTFE (15% G.F.) C - RTFE (15% C.F.) F - 50% 316 SS Filled PTFE M - TFM T - PTFE U - UHMWPE	T - PTFE F - 50% 316 SS Filled PTFE M - TFM U - UHMWPE V - Viton	T - NPT S - Socket Weld 4 - Butt Weld Sch. 40** 1 - Butt Weld Sch. 10** 5 - Butt Weld Sch. 5** 6 - Ext. BW Sch. 10** 7 - Ext. BW Sch. 40** A - ANSI 150# Flanged B - ANSI 300# Flanged G - Grooved K - Tank Bottom** P - Compression	2 - 2 Way	S - Straight Port 7 - ASEV Ball

Due to continuous product development, information may change without notice.

**316L - Standard Material



INLINE INDUSTRIES, INC.

9056 Garvey Avenue
Rosemead, CA 91770

Tel: (800) 568-8998
(626) 813-6188

Fax: (626) 813-6186

www.ballvalve.com
info@ballvalve.com

Distributed by: